

**OLAVLIA HOUSING  
DEVELOPMENT**  
*Shanghai, China*

MASTER PLAN,  
SCHEMATIC DESIGN  
& DESIGN  
DEVELOPMENT

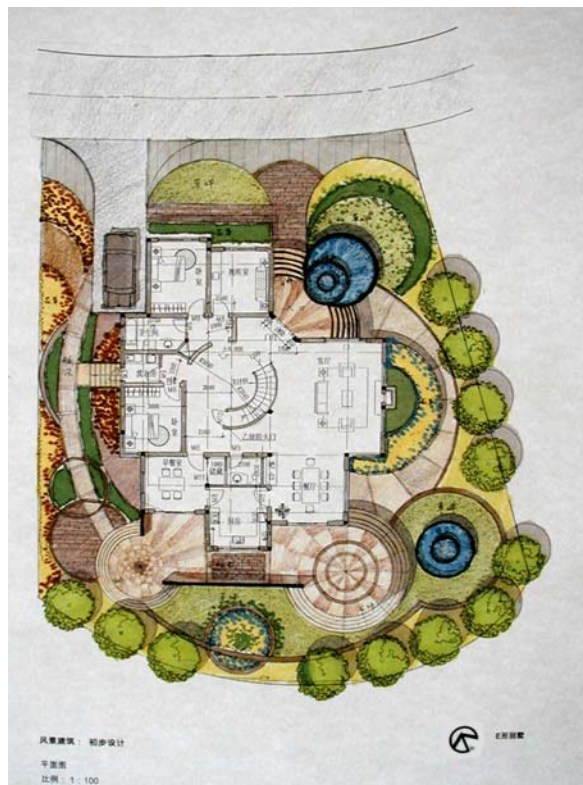
**Project Type**  
Model Housing Villas

**Client**  
Olavlia Villa  
Development

**Dates**  
Schematic Design,  
Design Development,

**Cost**  
\$ 50,000 /  
Landscaped Garden

**Prime Consultant**  
Robert La Rocca &  
Associates



**Description**

Robert La Rocca & Associates, through their joint venture company, Shanghai Ju Jia Urban Arts & Engineering Co. Ltd., designed the first two model Villa Gardens. Each garden is a part of a private high end Villa with its unique garden design, one of which is circular and the other hexagonal.