

**RAYCHEM
CORPORATION**
*Munich(Ottobrunn),
Germany*

MASTER PLAN,
SCHEMATIC DESIGN
& DESIGN
DEVELOPMENT

Project Type
Manufacturing
complex

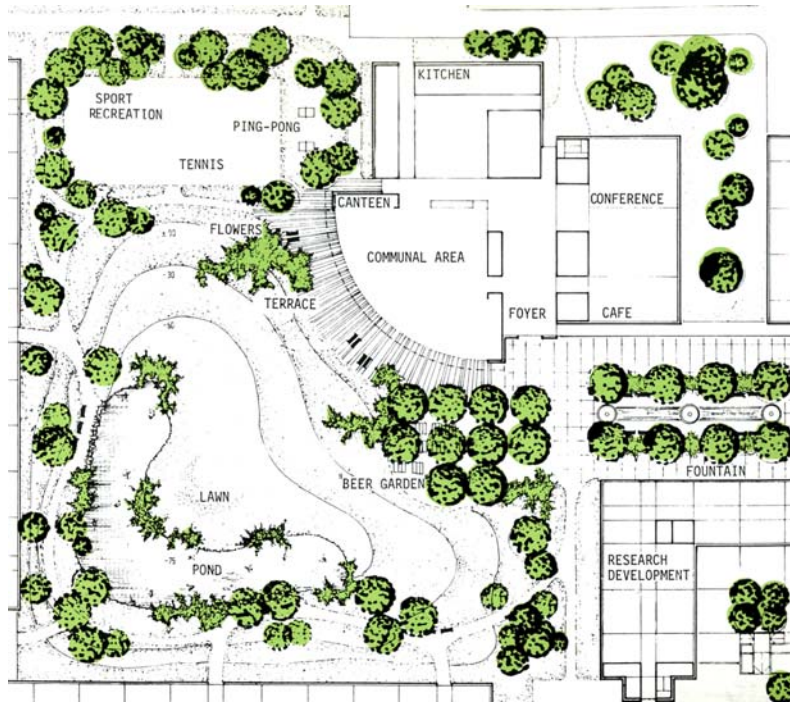
Client
Raychem Corporation,
Menlo Park, CA

Dates
Masterplan 1982/1983

Cost
\$2 million
Entrance Plaza
/Landscape

Prime Consultant

- MBT Architects.
San Francisco
- Henn + Henn
Architects & Engineers
Munich West Germany



Description:

Robert La Rocca & Associates were sub-consultants to the San Francisco architectural firm of MBT Associates. Landscape designs were prepared both in San Francisco and in Munich. The final proposal was a large waterfall and river gardens which would be the central spine of the complex.